




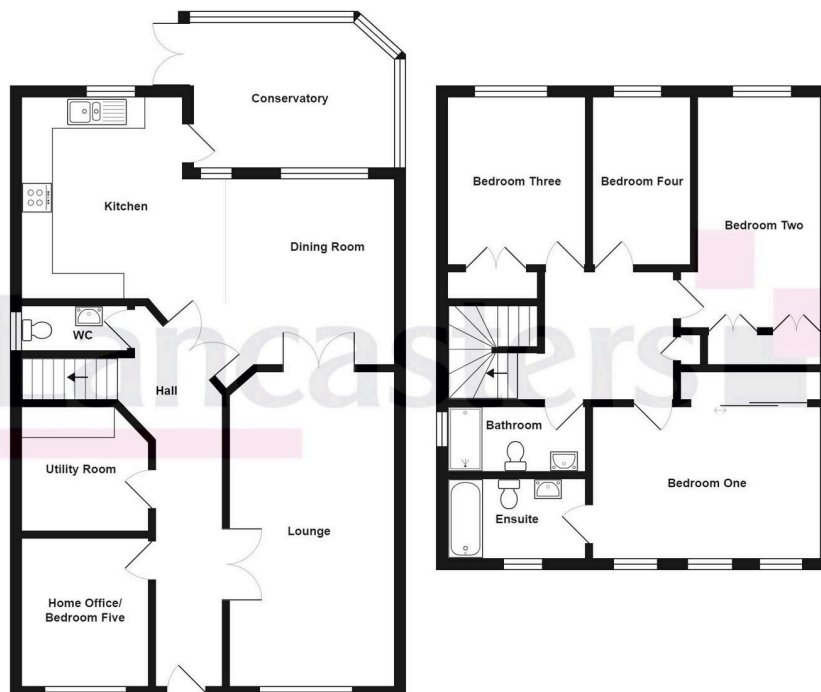
Ripley Grove, Redbrook, Barnsley, S75 2RX

Guide Price £375,000

 4  2  2



- STUNNING DETACHED PROPERTY
- EXTREMELY WELL PRESENTED THROUGHOUT
- OPEN PLAN KITCHEN/ DINING SPACE
- LARGE DRIVEWAY & OFF STREET PARKING
- HIGHLY REGARDED RESIDENTIAL AREA
- FOUR DOUBLE BEDROOMS
- HIGH QUALITY FITMENTS
- WELL APPOINTED & SPACIOUS
- LANDSCAPED REAR GARDEN
- LOCAL SERVICES, AMENITIES & TRANSPORT LINKS



TAKE A LOOK AT THIS! WHAT A TRULY FANTASTIC FOUR/ FIVE DOUBLE BEDROOM DETACHED FAMILY HOME BEING EXTREMELY MODERN, WELL PRESENTED AND SPACIOUS THROUGHOUT! LOCATED IN A HIGHLY SOUGHT AFTER RESIDENTIAL AREA CLOSE TO LOCAL SCHOOLS & BARNSELY HOSPITAL.